

Mini (6") FIREBALL XL5

Model Kit



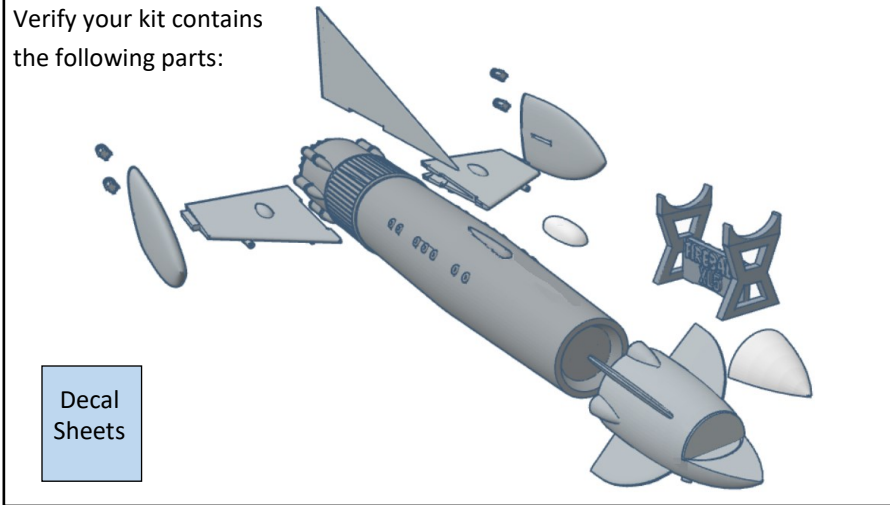
June 2021
by Gary Reign
[www.reign.com/
fireball_mini.html](http://www.reign.com/fireball_mini.html)

This is a resin hobby kit for moderate to experienced modelers.

Warning: This kit is produced using Photopolymer resins. Take precautions when sanding this material. Always use a dust mask and wear safety glasses.

Warning: This kit is not suitable for children under 14 as it contains small parts.

Verify your kit contains
the following parts:

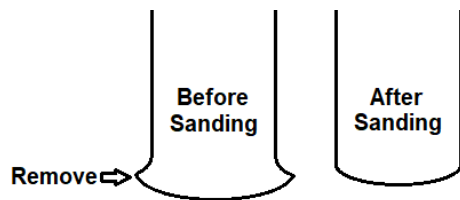


1 Prepping the Parts

The resin parts have been thoroughly cleaned and should not require additional cleaning if handled with care.

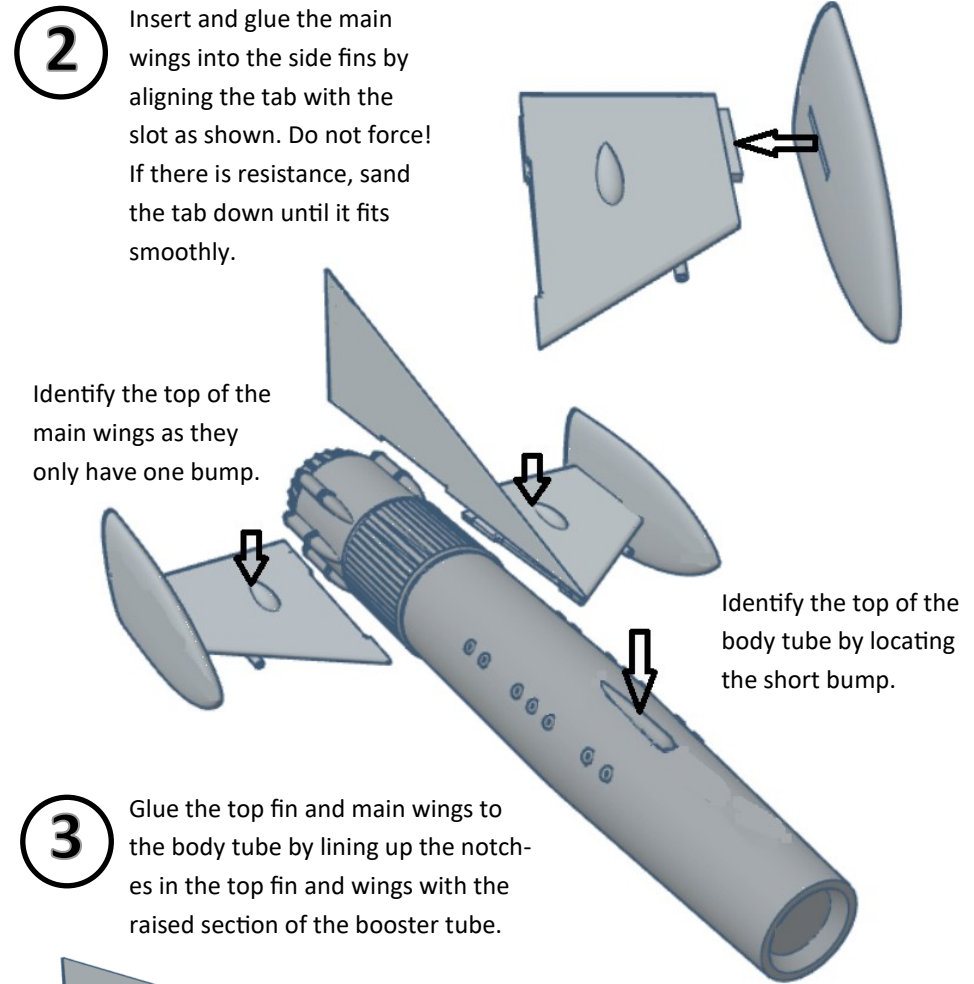
Some of the parts require mild sanding in the areas where the model rested on the 3D printer build plate. This results in what's referred to as "elephant's foot", i.e. a slightly raised ridge on one end of the model. You'll be able to feel the bump with your finger. Use some 320 or finer grit sandpaper to gently remove this before assembly to make a better looking finished model.

This example shows the small end of the body tube. The back of the wings and top fin may also require some sanding.

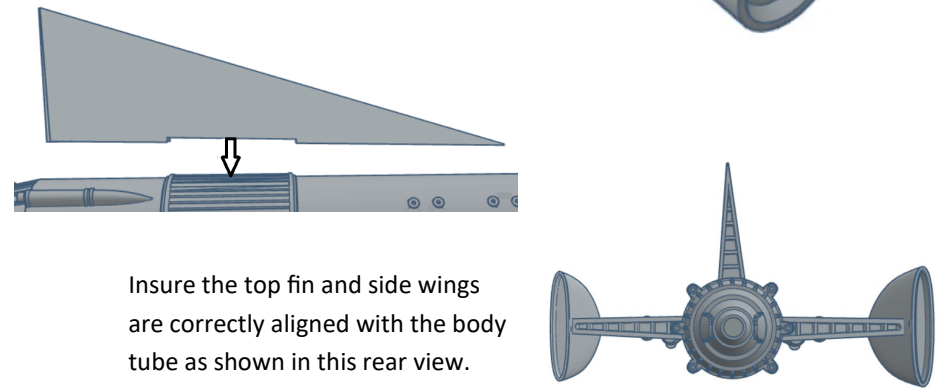


Assembly: Please read all of the instructions first to get a feel for how the model is assembled. CA (cyanoacrylate) glue is recommended for assembling the model.

2 Insert and glue the main wings into the side fins by aligning the tab with the slot as shown. Do not force! If there is resistance, sand the tab down until it fits smoothly.

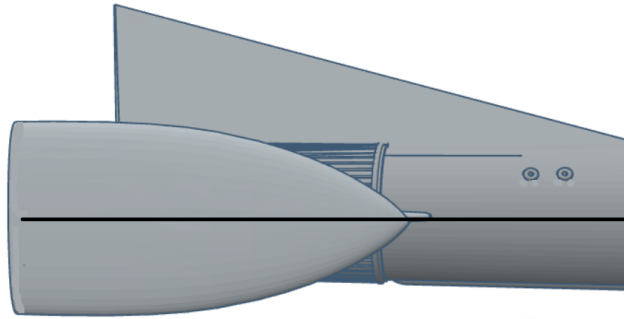


3 Glue the top fin and main wings to the body tube by lining up the notches in the top fin and wings with the raised section of the booster tube.

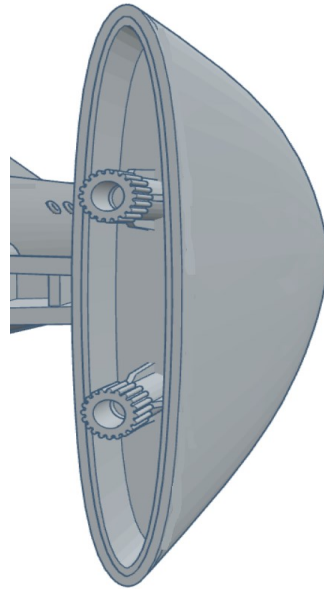


Insure the top fin and side wings are correctly aligned with the body tube as shown in this rear view.

When finished the wings and side fins should be aligned so that they are perpendicular to the main body tube as shown by the black line in the illustration below.

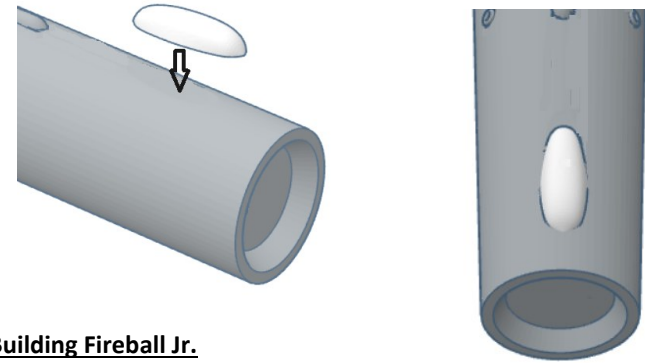


- 4** Locate the small booster nozzles and install 2 of them in the recessed section of each side fin as shown in these illustrations. (Extras are provided in case you lose one due to their small size.)

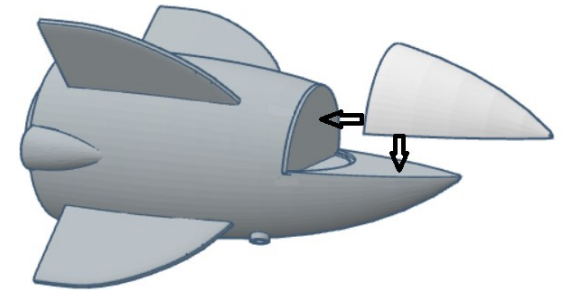


Note: You may wish to delay installing the translucent canopies (steps 5 & 6) until after you have painted the model. You may also wish to detail the canopies first by scribing or painting lines on them to represent the structures underneath. Refer to screen shots from the TV show for more details.

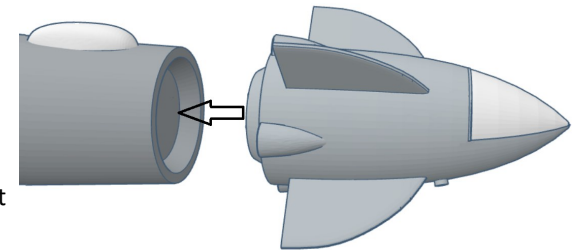
- 5** Locate the translucent second bridge canopy and glue it to the flattened section at the top of the body tube. The larger end of the canopy should be facing forward as shown in these illustrations.



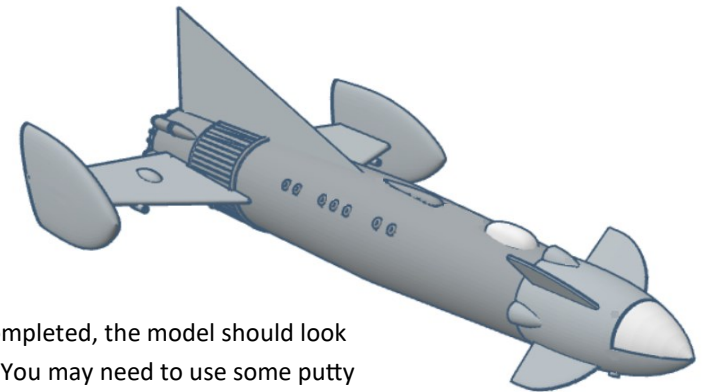
- 6** **Building Fireball Jr.** Locate the translucent main cockpit canopy and glue it to the cut-out in the nose cone of Fireball Jr.



- 7** Fireball Jr. is then glued to front of the booster. Alternatively, you could add magnets to make it easily removable so it can be displayed detached.



- 8** When completed, the model should look like this. You may need to use some putty to fill any gaps in the model before final sanding and painting.



9

Painting the Model

The model can be painted with any type of paint, acrylic or solvent based. Sand any rough spots with fine grade sandpaper. Prime first with a good fine detail primer (like Tamiya Fine Surface Primer). Do not use a “filler” type primer or you may obscure the details. The color of the ship is brushed aluminum along with bright red trim. The model shown below was painted with Alclad Matt Aluminum. The red areas were painted with Vallejo Bright Red acrylic paint. The red used should match the red on the decals for best results.

After priming and painting the main body color, paint the two outboard wing fins and the four small fins on Fireball Jr. with bright red that matches the red on the decals.

10

Applying the decals

You have a choice of painting all of the stripes and marking or using decals. Decals are provided for all of the yellow, blue and black markings.

Use the picture below for decal placement. Decals are water soluble. Handle the decals with care as they are thin and very small. These are home-made decals made on an inkjet printer. If you work them too long, they can crack and/or lose color. Extra copies are provided in case this happens. The decals with yellow are printed on a white background. Carefully cut the decal as close to the yellow as possible to avoid a white edge around them. You can touch up areas where the decals wrap around an edge by using matching yellow or red acrylic paint. The blue stripe decal is printed on clear film so it can be applied as one decal or cut into three individual stripes and applied separately.

For best adhesion and to conform to the sharp curves, use one of the decal setting solutions available (i.e. Solvaset, etc.). Don't over do it as these decals are somewhat fragile.

Cut the stripes for the JR's fins out as shown to the right, keeping the red stripe in the middle and making sure all three stripes are the same width. Apply this whole piece to each side of each fin. Extra copies are provided.



After the decals have been applied and dried, overspray the model with a clear gloss or matt coat to seal the decals to the model. The stand can be painted the color of your choice. You can now glue the two translucent canopies to the model.

The assembled, painted and decaled prototype model on its display stand. Enjoy!

